

**“For those of us who work in maintenance and production, this type of drive solution is a dream because of its low rpm and high torque. If you want reliability, hydraulic drives are the answer!”**

Jan Edlund, reliability engineer and head of preventive maintenance, Metsä Board Husum



### About Metsä Board Husum

Metsä Board is a listed Finnish company that is part of Metsä Group – a forest industry group that produces renewable products from Nordic forests. In addition to Metsä Board, the Group consists of the cooperative Metsäliitto and its business divisions Metsä Forest and Metsä Wood, as well as the subsidiaries Metsä Tissue, Metsä Board and Metsä Fibre.

Metsä Board Husum is a mill that produces bleached chemical pulp and paperboard. The mill also has a line that produces barrier board for liquids. There is a strong market for these products, and following

investments in both the paperboard line and Europe’s largest paperboard machine, Metsä Board aims to become the market leader in this segment.

Sustainability is a constant goal for the mill. The Group is committed to improving sustainability, from planting to felling, and from energy consumption to recycling. The mill is currently expanding its own energy generation and will soon become 80 percent self-sufficient as a result of investments in soda boilers and turbines. The goal is that the mill should be entirely fossil-free by 2030.



“For us, the benefit of CMP is that it lets us check all the parameters in real time from a computer. It also means that Hägglunds personnel can inform us if they see any odd behavior in the drives. Even though we monitor them ourselves it’s good to have a second opinion.”  
Niklas Sjölund, hydraulics technician

Hägglunds is a brand of Rexroth, a leading global supplier of drive and control technologies. Hägglunds solutions enrich a comprehensive Rexroth portfolio.



Metsä Board Husum – a success story

## Boosting reliability with hydraulic drives in critical applications



# New technology pays dividends for Metsä Board Husum

**Unscheduled stoppages mean massive production losses and high costs for Metsä Board Husum – a leading pulp and paperboard manufacturer. Because high reliability is so important, hydraulic drive systems have increasingly become the company’s choice. “We now have 21 Hägglunds motors in operation. We’ve switched from gearboxes to hydraulic motors in several locations,” reports Jan Edlund, reliability engineer and head of preventive maintenance.**

Metsä Board Husum is a mill that produces bleached chemical pulp and paperboard, and is one of Europe’s leading manufacturers of folding box board for gift packaging and other high-end paperboard products. We meet Jan Edlund during a visit to this modern mill, where his task is to ensure the machines continue running smoothly, with no unexpected interruptions.

“We’ve set up new routines for preventive maintenance,” Edlund says. “Many years ago we had 17 employees working on pump repairs. Thanks to preventive maintenance, we’ve been able to reduce that number to two. We find a fault, create a work order and carry out maintenance during scheduled shutdowns. We are naturally prepared to tackle problems, but despite having thousands of motors and pumps the team is rarely called out.”

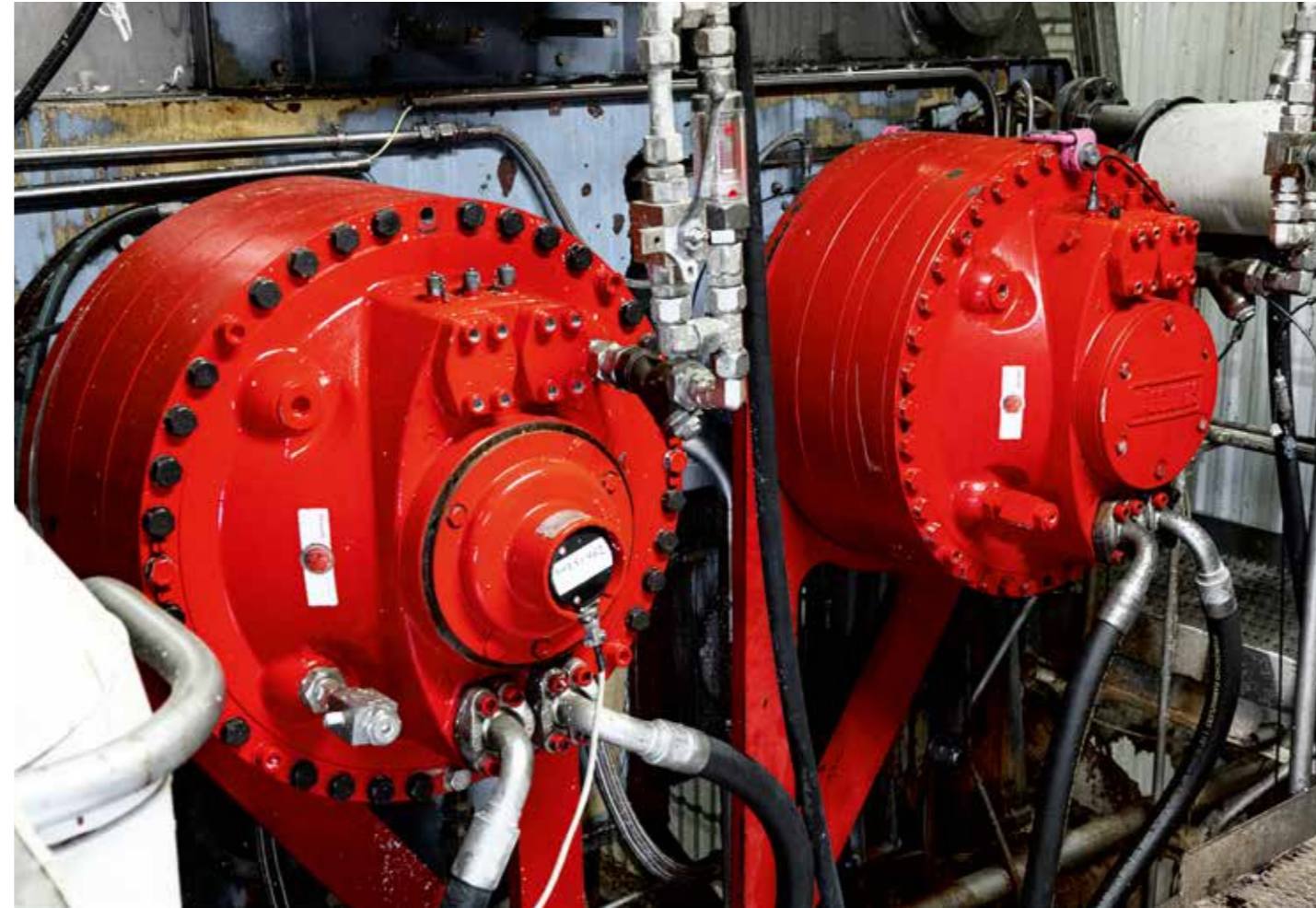
That picture is confirmed by Mattias Ahlqvist, a hydraulics technician.

“Very little goes wrong. I started in 2007 and I’ve hardly ever seen a breakdown,” Ahlqvist says.

## IDEAL APPLICATION FOR HYDRAULICS

Hydraulic motors can be installed almost anywhere in a pulp and paper mill. The Husum mill has no shortage of examples. Hägglunds hydraulic drives from Bosch Rexroth are installed in class A applications – wherever production losses would quickly get expensive if a machine came to a stop. Examples include the cooking and washing stages, as well as conveyors and reactors.

“For those of us who work in maintenance and production, this type of drive solution is a dream because of its low rpm and high torque. If you want reliability, hydraulic drives are the answer! It’s also relatively easy to replace a hydraulic motor, since no foundation is needed,” says Jan Edlund.



The Husum mill’s relationship with Hägglunds drive solutions began in the mid-1970s, long before Hägglunds joined the Bosch Rexroth family. At that time, the mill was investing in new washing equipment for one of its pulp lines.

“We installed Hägglunds Viking hydraulic motors on the wash presses,” Edlund relates. “In fact, one of the motors we installed in 1976 is still running today! This experience taught us the value of characteristics such as quality and reliability, and it led us to install the twenty-plus drives we have at the mill today.”

## RELIABLE DELIVERY

Metsä Board Husum handles its own replacement of motors and pumps, but the company also takes in specialist advice from the Hägglunds team at Bosch Rexroth.

“It’s important to have reliable suppliers when we need help. This is especially true when

it comes to replacement parts, which can otherwise have very long delivery times,” says Jan Edlund. “It’s also good to have a fresh pair of eyes to check out our machines. Sometimes you overlook things you see every day, so you might miss a small leak. Regular cleaning helps to prolong the service life.”

All Hägglunds customers around the world are offered service agreements, and each contract is tailored to the individual customer. The Husum mill has a contract for regular servicing by Hägglunds specialists. Teamwork between the Metsä and Hägglunds service teams has extended the service life of the drives even further.

“The benefit of having a contract with Hägglunds is that we can contact them if anything unexpected happens at the mill and we need help,” says hydraulics technician Niklas Sjölund. “They are very accessible and show up quickly to help. Because we have worked closely with

**“On the few occasions there has been a fault they have solved it quickly, even complex problems. The standard of service and reliability is excellent.”**

Mattias Ahlqvist, hydraulics technician

Hägglunds for such a long time, we also know what products they have and how quickly they deliver. This is especially important if we need parts urgently, as we know we can rely on them.”

Sjölund’s colleague, Mattias Ahlqvist, agrees: “They have a great service organization. On the few occasions there has been a fault they have solved it quickly, even complex problems. The standard of service and reliability is excellent. For example, when we once needed a back-up pump, we were able to borrow one from them.”

“We are increasingly investing in this form of monitoring as AI solutions and remote monitoring are built into the machines,” says Niklas Sjölund. “For us, the benefit of CMP is that it lets us check all the parameters in real time from a computer. It also means that Hägglunds personnel can inform us if they see any odd behavior in the drives. Even though we monitor them ourselves it’s good to have a second opinion. There are many Hägglunds installations that are similar, so they are very good at assessing condition.” ●

## EARLY ADOPTER

Metsä Board Husum aims to lead the way in adopting new technology and likes to test new solutions at an early stage.

“Thanks to our interest in technical development, we’ve been able to try out new equipment from Hägglunds over the years,” says Jan Edlund. “We tried out the very first Marathon motors, as well as the CB motors when they were developed. That helps us see future solutions, both for production and for maintaining our equipment. This can involve everything from AI and the development of maintenance products to new methods for manufacturing products.”

As a result, Metsä Board Husum was one of the first to install Hägglunds CMP – a maintenance tool that continuously monitors the condition of the hydraulic system.

